

SpectraSlide® AP-1

Cat # L72061

Storage

Room temperature



LEARN MORE

Product Description

Slide Specifications

Materials	PMMA
Dimensions (W x D x H)	75 mm x 25 mm x 2.1 mm
Number of chamber	1 chamber
Sample volume	Less than 20 μ L

Dye

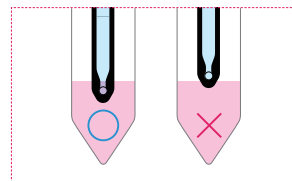
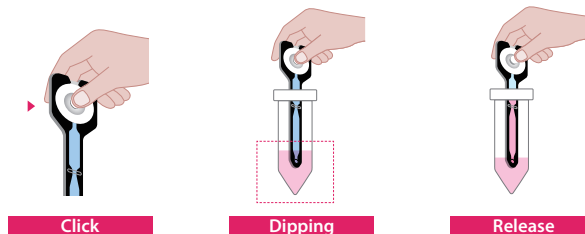
Acridine orange(AO) and Propidium iodide(PI)

The SpectraSlide® AP-1 is an innovative disposable cell counting device designed for the LUNA-FX7™ Automated Cell Counter. It simplifies the cell counting process by integrating sampling and staining into one step. The pre-coated AO and PI dissolves instantly upon contact with liquid, ensuring immediate and effective cell staining. To ensure consistent sampling and usability, the SpectraSlide® AP-1 incorporates haptic feedback and a click mechanism. When used with the SlideBed, it prevents contamination by blocking residual liquid from accessing the internal components of the cell counter.

With its innovative features and user-friendly design, the SpectraSlide® AP-1 offers a reliable and efficient solution for precise, reproducible cell counting.

Directions for Use

1. Prepare the cell sample for counting.
2. Tear off the top of the wrapping and carefully remove the slide.
3. Press the rubber dome before inserting it into the tube for proper cell sample loading.
4. Make sure the hole is completely submerged for proper cell sample loading.
5. Release the rubber dome gently while keeping your finger in contact.



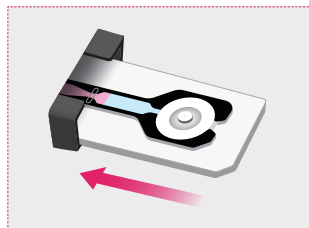
6. Ensure the sample reaches the line on the SpectraSlide® AP-1.



7. Wipe off any excess liquid from the slide before cell counting.
8. Place the slide correctly into the SlideBed. Please wait 30 seconds to allow cell movement to stabilize.



9. Insert the slide into the LUNA-FX7™ Automated Cell Counter.



Disclaimer

This product is for research use only.

Please consult the material safety data sheet for information regarding hazards and safe handling practices.

Additional information is available on our website www.logosbio.com.

© Aligned Genetics, Inc. 2025. All rights reserved.



LEARN MORE

HEADQUARTERS

FL 3
28 Simindaero 327beon-gil, Dongan-gu
Anyang-si, Gyeonggi-do 14055
South Korea
Email: info@logosbio.com
Tel: +82 (31) 478-4185
Fax: +82 (31) 360-4277

USA

7700 Little River Turnpike STE 207
Annandale, VA 22003
USA
Email: info-usa@logosbio.com
Tel: +1 (703) 622-4660, +1 (703) 942-8867
Fax: +1 (571) 266-3925

EUROPE

1 allée Lavoisier
59650 Villeneuve d'Ascq
France
Email: info-france@logosbio.com
Tel: +33 (0)3 74 09 44 35
Fax: +33 (0)3 59 35 01 98